

# LUBREQUIP AFRICA

## 2024

# Product CATALOGUE



Witbank Branch:  
25/27 Industrial Crescent  
Witbank  
1036



+2713 697 5140



[www.lubreqip.africa](http://www.lubreqip.africa)



[admin@lubreqip.africa](mailto:admin@lubreqip.africa)

Your lubrication equipment partner

02



# Oil Safe<sup>®</sup>

The Oil Safe Product Family of interchangeable Lids, Drums and Accessories has revolutionized the transfer of Lubricants from bulk storage to point of application

## PRODUCTS



### Mini Spout

Outlet approx. 7mm (9/32")



### Utility Lid

Multipurpose lid with large outlet hole ensures controlled past pouring of lubricants.



### Stumpy Spout

The wide spout model is designed for application where higher lubricant flow is required.



### Stretch Spout

Designed for use where precise pouring of lubricants is required incl. hard to reach areas.



### Hoses

Flexible spout hoses attachments for awkward or hard to reach areas.



### Storage lid

With this lid, Oil Safe Drums can be pre filled for storage or easier transportation.



### Drums

Fully interchangeable with Oil Safe Lids, with extra wide neck opening for rapid pouring and easy cleaning



### Pump

Downstroke discharge pump. Delivers 1 Litre for approx. 14 strokes. Supplied with outlet hose and anti-drop nozzle

# LUBREQUIPAFRICA PRODUCTS RANGE



## **Grease control valve**

Heavy duty and robust grease control valve



## **Alemite 7149**

Bucket pump, adjustable leverage gives variable pressure. Capacity 18kg



## **Samoa 12 S.P**

Standard duty Lever grease control valve. Complete with rigid extension and coupler



## **Constant Level Oilers**

Constant level oilers maintain a constant fluid level at all times in gearboxes and pumps. 85cc - 500cc capacities



## **Drip feed lubricators**

Drip feed lubricators in diameters from 30mm to 100mm  
Thread range: 1/8" ,1/4" , 3/4"  
BSP



## **Oil Windows**

Oil windows are available in plastic, aluminium and steel with glass or polycarbonate lenses.



## **Oil level gauges**

Available in various lengths (40 - 300mm) for checking oil in reservoirs, and gearboxes etc.  
Thread range: 1/4" and 3/8"  
BSP



## **Quick Coupler**

Compressed air and fluid line (Oil) Couplers.  
Flat face couplings enable you to eliminate contamination.

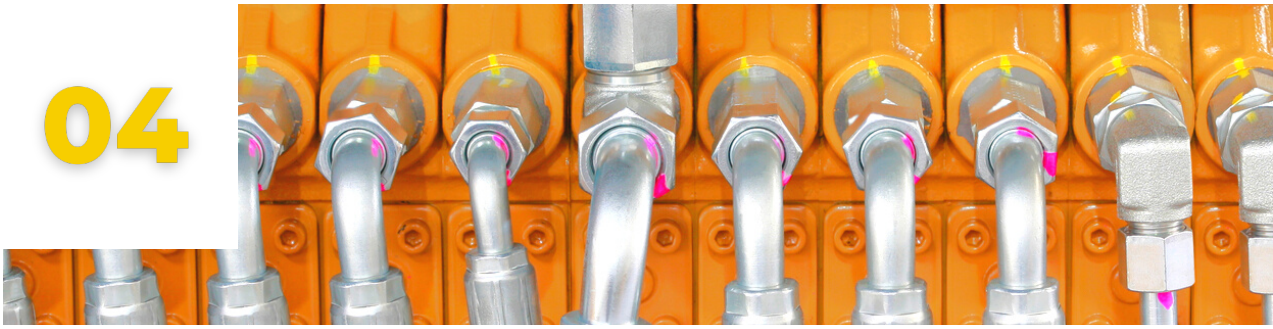


## **Oil Cups**

Oil cups with treaded mounting or press-fit, available in a wide range of sizes.



04



# LUBREQUIPAFRICA PRODUCTS RANGE

## GREASE NIPPLES



### Button Head Grease Nipples

- AL A1184 1/8" BSP
- AL A1186 1/4" BSP
- AL A1188 3/8" BSP



### Hydraulic Grease Nipples

- 1/4" U.N.F Threads
- AL 1641-B Straight
- AL 1937-B 45 Angle
- AL 1911-B 90 Angle
- AL 1698-B Straight Long

### Hydraulic Grease nipples Metric Thread

- H1 - 6mm x 1 Straight
- H2- 6mm x 1 45 Angle
- H3 - 6mm x 1 90 Angle
- H1L -6mm x 1 Straight long
- H1 -8mm x 1 Straight
- H2- 8mm x 1.25 Straight
- H3 8mm x 1 90 Angle
- H1 - 10mm x 1.5 Straight
- H2 - 10mm x 145 Angle
- H3 - 10mm x 1 90 Angle

### British Standard Thread

- AL 1610 BT 1/8" BSP Straight
- AL 1688 BT 1/8" BSP 45 Angle
- AL1612 BT 1/8" BSP 67 Angle
- AL 1613 BT 1/8" BSP 90 Angle
- AL 1627 BT 1/4" BSP Straight
- AL1629 BT 1/4" BSP 45 Angle
- H3R 1/4 1/4" BSP 90 Angle



### Gear oil bucket pump

Pumps from the lightest to the heaviest gear oils.  
Capacity 20L



### Gurtech Foot pump(G. GUN)

Foot operated Grease Gun.  
canister holds 7.5kg grease and stands 380mm high. Delivers 3ml per stroke to 630 bars (9000 PSI)



### Grease nipple couplers

- AL 308730 Narrow High Pressure
- AL 6304-B Heavy Duty
- AL6304 - C heavy Duty - Check Valve
- PR 12004 Standard Duty - Button Head
- AL 42030 - A Heavy Duty - Button Head





05

# LUBREQUIPAFRICA PRODUCTS RANGE

## PORTABLE TROLLEYS



### Lubrequip portable trolley

Purpose built portable oil trolley for filling filtered oil into machines.

Standard container sizes :  
70L and 100L

## BULK METERS & ACCESSORIES



### Proflo Truck & Bulk Meters

Suitable for use on truck and bulk fluid transfer applications.  
Sizes from 1 1/2" - 6"



### Veeder Root EMR

Electronic register with an optional ticket printer.



### Veeder Root

Mechanical Register with optional Ticket printer.  
Set stop counter.



### Bulk Strainers

Range to suit bulk flow meters



### Rotor-vane Pumps

We stock a range of rotor-vane pumps to suit bulk transfer applications.

06



# LUBREQUIPAFRICA PRODUCTS RANGE

## MECHANICAL AND DIGITAL FLOW METERS



### **K33 1 "Flow Meter"**

Flow rate of 100L/mm max  
pressure of 10 Bar, 3 digit display



### **K900 Flow meter**

Various specs available



### **Fill rite 806 1 "Flow meter"**

Flow rate of 70L/mm max  
pressure of 500 psi = 3.4 bar



### **Remote display**

LCD 5mm, 8 digit.  
Pulse input, supplied with  
wall mount bracket



### **K40 Mechanical Oil Nozzle meter**

1/2 Inlet/outlet connection.  
For use on Diesel and Oil  
applications



### **K200 1/4" Pulse Meter**

Flow rate 10 - 100L/h  
30 Bar Max.



### **K24 Turbine Digital Meter**

1" Inlet/outlet connection.  
Can be used for diesel, oil or  
water.



### **K200 1/4" Flow meter**

Flow rate 0.1-2.35L/min.  
Bar, max pressure, local LCD  
Display



### **K400 1/2" Flow meter**

Flow rate of up to 30L/min.  
Max pressure of 70 bar.  
LCD display



### **K600 Pulse Meter**



### **K600 Flow meter / Pulser**

Flow rate of up to Max  
pressure of sizes aluminium  
body



### **K700 Pulse Meter**



# LUBREQUIPAFRICA PRODUCTS RANGE

## NOZZLES & DISPENSING KITS



**K500 Batch Nozzle 1/2"**  
 Flow rate of up to 30L/min  
 Max pressure 70 Bar  
 Max pre-selectable quantity 99.1L  
 Battery powered LCD display



**K40**  
 Mechanical oil nozzle meter.  
 Max flow rate of 30L/min  
 1/2" inlet and outlet



**Self 2000 Nozzle**  
 1" Manual Nozzle  
 Flow rate of 120 L/min  
 complete with swivel



**Plastic Nozzles**  
 Flow rate of 80L/min  
 suitable for water, diesel and oil.



**Automatic Nozzles**  
 Connections 1"  
 A60 - 60L/min  
 A80 - 80L/min  
 A120 - 120L/min



**Cartridge Filter/Diesel/Oil**  
 Complete with head 60 L/min  
 3/4" & 1" Connection.



**Easy Oil Nozzles**  
 Flow rate of up to 30L/min.  
 Max pressure of 70 bar.  
 Available with hK400 digital meter



**K600**  
 High flow nozzle meter.  
 Max flow of 60 L/min 3/4" inlet and outlet



**Self 3000 Nozzle**  
 1" Manual nozzle  
 Flow rate of 150 L/min  
 complete with swivel/



**Art. 33151**  
 High volume oil/diesel delivery gun.  
 3/4" inlet and outlet



**Nozzle 280 Bulk**



08



# LUBREQUIPAFRICA PRODUCTS RANGE

## LUBRICATION & WORKSHOP EQUIPMENT



### **Art 10705 / Art 10805**

Air operated brake bleeder, chromium plated with standard plugs.



### **Art RM 64033**

Portable grease pump for drums 15 - 50kg.



### **Art 46215**

Air operated oil dispenser with 24L tank, equipped with lever gauge also available in hand type.



### **RM 37150**

Heavy duty mobile kit for 180/220kg drum, comes with hose reel, 5:1 pump and digital oil gun.



### **Art 44060**

Oil suction drainer with 65L wheel mounted tank, equipped with lever gauge, funnel and antispash filter



### **Art RM 60310**

Hand operated grease pump for drums 15 / 20kg



### **Art 46215**

115L Pantograph oil suction drainer



### **Depuroil**

Oil filter transfer unit. Ideal tool for decontaminating oil by removing suspended particles.



### **Art 42060**

65L Pit oil drainer, suitable for gravity draining of engine and gearbox oil



### **Viscotroll DC & AC**

Mobile unit for oil transfer. Unique solutions for automotive transport workshops and maintenance.



09

# LUBREQUIPAFRICA PRODUCTS RANGE

## LUBRICATION & WORKSHOP EQUIPMENT CONTINUED...



### **Art 68113**

Foot operated grease pump high pressure, wheel mounted 13kg capacity.



### **MCO and JMCO Systems**



### **Hose Reels**

Series 510 Stainless Steel hose reel Aisi. 604 swiveling and fixed. Length : 12 - 20m



### **Pneumatic and Double acting Pumps**

## PUMPS & DISPENSING KITS



### **Ms25 Cast Iron Rotary Pumps**

F Flow rate of 23L/min  
Rotation of 70 RPM  
Overall length of 1.3m for oil or diesel



### **Drum 2000 12V / 24V**

Flow rate 42 L/min equipped with 2" drum kit, nozzle holder, telescopic suction pipe hose and self 2000 nozzle.  
Optional : K33 / K 44 Meter



### **Semi - Rotary Wing pumps**

Range from 3/4" - 1/2"



### **LP -32 Rotary pump**

High flow  
Up to 100L/min

10



# LUBREQUIPAFRICA PRODUCTS RANGE

## PUMPS & DISPENSING KITS CONTINUED...



### **Fill rite 152 Pump**

Flow rate of 75L/min. Equipped with bung adaption, 2" telescopic pipe, hose, and aluminium spout.



### **Fill Rite 1211 / 2411**

1210/2410 with fill rite 807 meter flow rate of 45L/min.



### **Fill Rite 1210/2410 pump**

Flow rate of 45L/min 3m 3/4", hose, manual nozzle, thermal overload protection, bypass valve, bung adopter, 1" inlet and 3/4" outlet available in 12/24 vdc and 230 Vac Flame proof



### **Bi Pump 12V/ 24V DC**

Flow rate of 85L/min  
Current 35 Amps/ 18 Amp.  
Inlet/outlet connection's of 1" Integral bypass



### **Panther 220V Pumps - Models Panther 56 & 72**

Flow rate of 56 L/min, 72L/min.  
Power 220V / 380V. Inlet/outlet Connections of 1" Integral by-pass valve and 100 micron filter



### **E80 /E120 Pumps**

Flow rate 75L/min / 100L/min  
Power 230V + 380V  
Inlet / Outlet connections of 1" Integral by-pass Valve



### **Bi-pass 2000 12V / 24V**

Flow rate of 40L/min.  
43 L/min current 18 Amps/ 9 Amps inlet/outlet connections of 3/4".  
Optional battery connections.



### **Vantage DC**

Diesel transfer pump.  
12V or 24V, 1" Inlet and outlet.  
Up to 75L/m



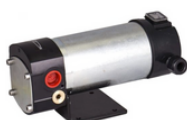
### **Viscomat Gear**

220V Oil pump. High pressure, High viscosity oils. Up to 14L/m



### **Viscomat Vane Pump**

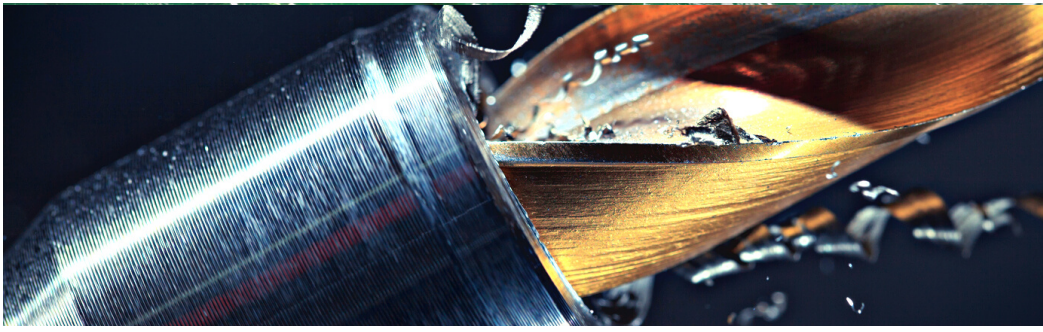
220V Oil pump. High flow. Low viscosity oils. Up to 50L/m



### **Viscomat DC**

Oil Transfer pump. 12V /24V.  
3/4" Inlet and Outlet. Up to 10L/m





11

# LUBREQUIPAFRICA PRODUCTS RANGE

## AIR TOOLS

### DRILLS



#### **SI - 5200A**

12.7 mm CAP  
Free speed : 6000rpm  
Length: 231mm  
Net weight: 1.06kg



#### **SI - 5300A**

9.5mm CAP  
Free speed: 2000rpm  
Length: 133mm  
Net weight :0.91kg

### IMPACT WRENCHES



#### **SI -5200A**

#### **SI-1610SR**

1/2".SQ.DR  
Bolt capacity: 18mm  
Length: 148mm  
Net weight: 1.04Kg



#### **SI -1550**

#### **SI - 1550SR**

3/4".SQ.DR.  
Bolt capacity:24mm  
Length:218mm  
Net weight :3.25kg



#### **SI-1860**

#### **SI-1866 (150mm ext.)**

1"SQ.DR.  
Bolt Capacity: 41mm  
Length :285mm, 438mm  
Net Weight: 10.9kg, 12.4kg

#### **SI -1870**

#### **SI - 1876 (150mm ext.)**

#### **SI - 1878 (200mm ext.)**

1" SQ.DR  
Bolt Capacity : 40mm,41mm,45mm  
Length:350mm, 516mm, 567mm  
Net weight: 10.6kg, 12.1kg, 12.3kg

#### **SI - 1900**

1.5". SQ.DR.  
Bolt capacity: 55mm  
Length: 510mm  
Net weight: 18.0kg

### GRINDERS



#### **Die Grinder**

#### **SI - 2011S**

Free Speed 25 000rpm  
Length: 170mm  
Net weight: 0.60kg



#### **Disc Grinder**

#### **SI - 2500L (lever type)**

#### **SI - 2500 (Rotary Type)**

Bolt size: 100mm(4")  
Free speed : 12 700 rpm  
Length : 223mm  
Net weight: 1.82kg, 1.87kg

12



# LUBREQUIPAFRICA PRODUCTS RANGE

## HYDRAULIC AUTOMATIC GREASERS

### **18 Element hydraulic automatic greaser.**

Multiline radial lubricator 15kg, 18 element hydraulic drive with slide-out base plate and slides

Reservoir size: 15kg

Pump Elements :18

Max element discharge: 0.25cc per stroke

Delivery pressure: 200 bar

Drive ratio: 70:1

Mounting: Slide-out HD Base plate with remote filling point



### **9 Element electric automatic greaser**

Multiline radial lubricator 15kg, 9 element electric drive with slide-out base plate and slides

Reservoir size: 15kg

Pump Elements :9

Max element discharge: 0.25cc per stroke

Delivery pressure: 200 bar

Drive ratio: 70:1

Mounting: Base plate with slides







If you have pumps, need on-site servicing or have a lubrication requirement, you should be talking to us.

Give us a call it is that simple!







THANK  
YOU

# LUBREQUIPAFRICA



Witbank Branch:  
25/27 Industrial Crescent  
Witbank  
1036



+2713 697 5140



[www.lubreqip.africa](http://www.lubreqip.africa)



[admin@lubreqip.africa](mailto:admin@lubreqip.africa)

Your lubrication equipment partner